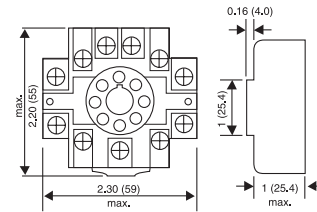


## 1/16 DIN TIMER ACCESSORIES—8 PIN ACCESSORIES

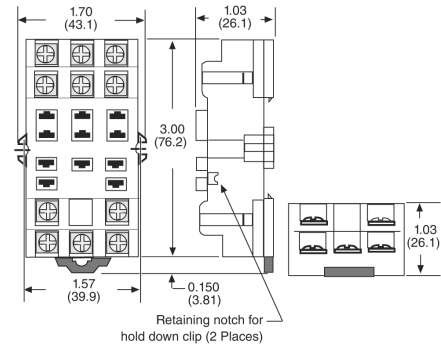
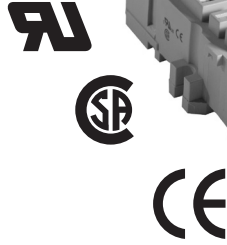
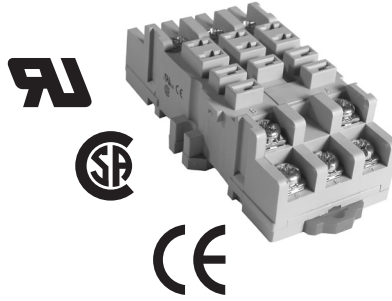
000-825-86-00

11-Pin surface DIN rail socket.  
Recommended for use with all 11-pin octal plug-in devices when surface mounting or DIN rail mounting.



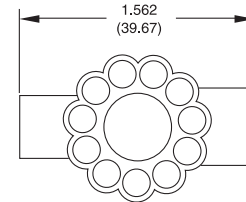
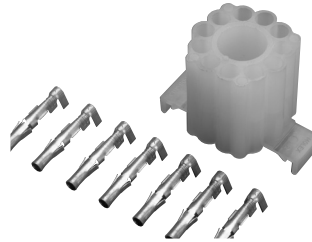
70-463-1

11-Pin Socket, DIN/Panel Mount, with screw terminals & Clamping plates.



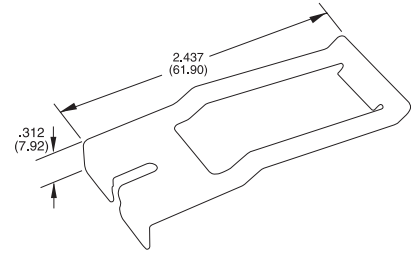
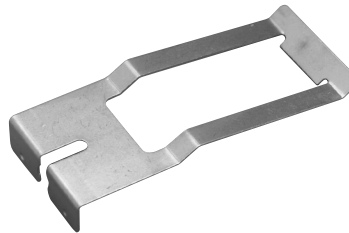
314-260-07-00

Plug-on socket kit (11-pin).  
Recommended for use with all 11-pin octal plug-in devices. Panel mounting only. Attach the wires to the solderless connector with a crimping tool.



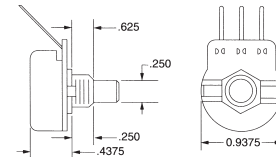
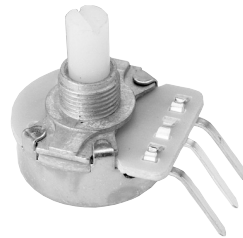
405-025-07-00

Hold down for part #000-825-86-00.  
Two (2) needed for proper installation.



101-026-105

Recommended for use with all the ATC Diversified Electronics family of "remote adjustable" timers. Proper spacing is maintained for UL and CSA applications. This linear taper potentiometer has a non-conductive shaft attached to the internal conductive plastic wafer. The brass bushing is 3/8" x 32NEF and accepts adjustment hardware 1000540070, 100054071.



100-054-073

Recommended for use with any adjustment or switch having a 1/4" shaft. This knob slips over the shaft and is secured in place by a #6-32 set screw. The knurled, mirror finished, black thermostat knob has a white pointer line for reference.

