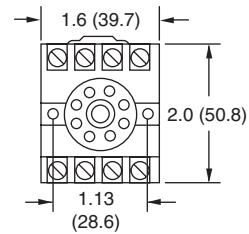
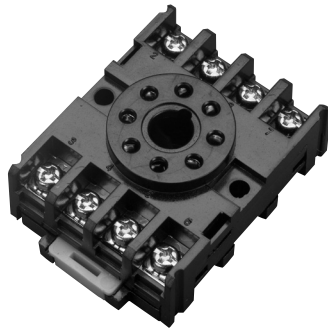


1/16 DIN TIMER ACCESSORIES—8 PIN ACCESSORIES

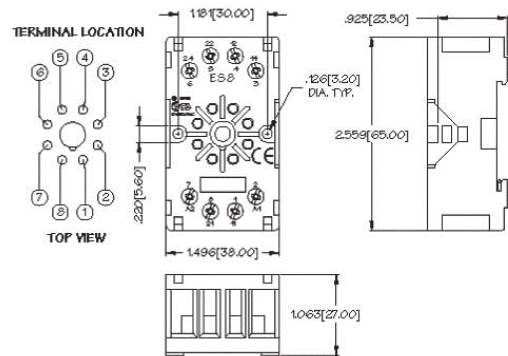
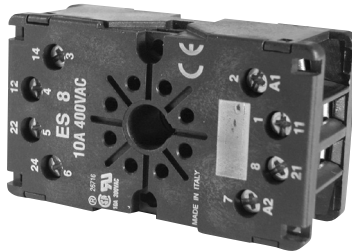
000-825-85-00

8-Pin surface DIN rail socket.
Recommended for use with all 8-pin octal plug-in devices when surface mounting or DIN rail mounting.



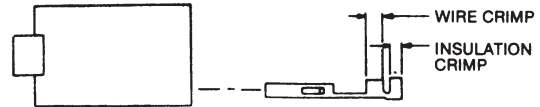
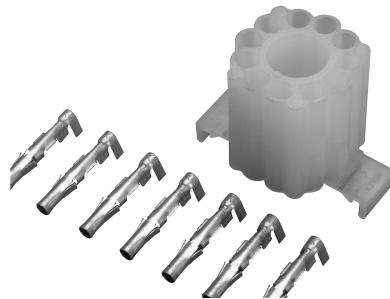
API 008FS

8-Pin Finger-Safe Socket.



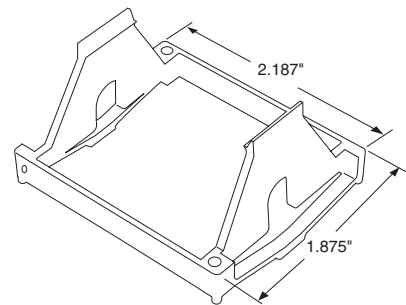
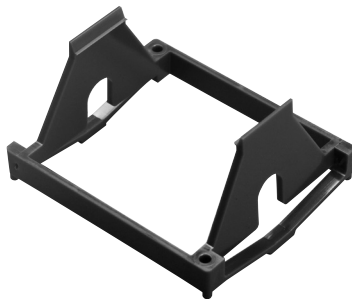
319-261-45-00

Plug-on socket kit (8 pin). Recommended for use with all 8-pin octal plug-in devices. Panel mounting only. Attach the wires to the solderless connector with a crimping tool.



405-320-02-00

Panel Mounting bracket. Recommended for use with all 1/16 DIN timers when panel mounting. Use in conjunction with the 8-pin or 11-pin panel socket with rear facing terminals.



407-025-13-00

Hold-down for part #000-825-85-00.
Two (2) needed for proper installation.

