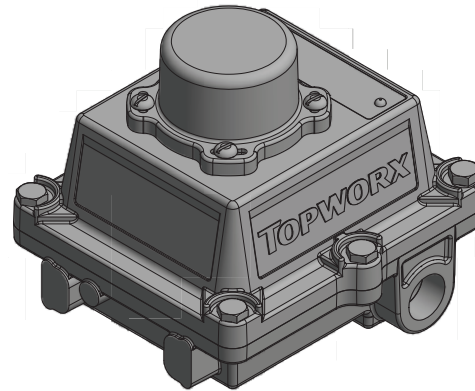
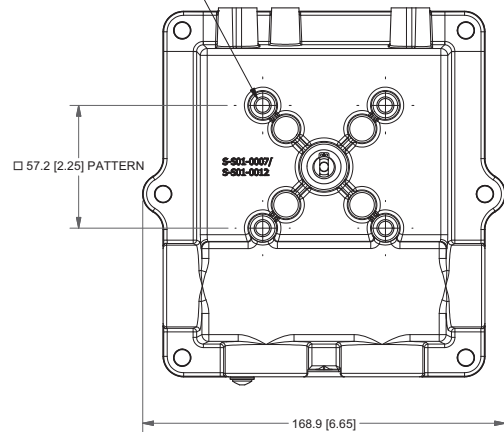


(4) 5/16-18 UNC-2B MOUNTING HOLES



**NAMEPLATE**



P433641 IECEx SIR 14:0078X OL 22/18/18

Ex ia IIC T6/T4 Gb; -60°C ≤ Ta ≤ 70°C/81°C  
IP66/67  
SWITCH: Ui=16V, Ii=25mA, Pi=64mW (Reference Cert for Ci and Li);

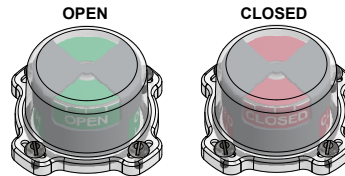


Telemetry Equipment for use in Hazardous Locations  
**WARNING:** Substitution of components may impair intrinsic safety. The installer shall confirm which certified sub-assemblies are fitted and ensure compliance with the entity parameters in the appropriate certificate. Potential electrostatic charging hazard - Clean only with damp cloth.

**TOPWORX**  
Designed In Louisville, Kentucky, USA  
Assembled in USA

Model #:

Serial #:



**MODEL NUMBER**

DXP-E40GN4S0000P

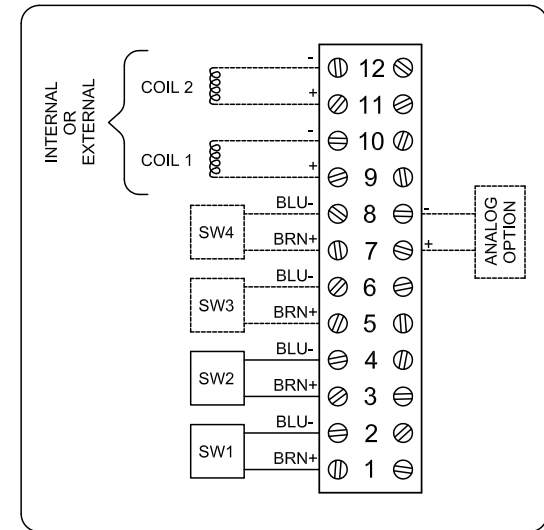
**PRODUCT LINE**

Switchbox DXP and DXS

**SPECIFICATIONS**

Enclosure	Tropicalized aluminum
Bus/Sensor	NJ2-V3-N
Area Classification	Intrinsically safe
Visual Display	Standard 90° Green OPEN, Red CLOSED
Shaft	NAMUR 316 stainless steel
Conduit Entries	(2) 3/4" NPT, (2) 1/2" NPT
O-Rings	Silicone
Pilot	No pilot device(s)
Spool Valve	No spool valve
Valve Cv	No valve Cv
Manual Override	No manual override
Regional Certification	PESO
N Switch	No N Switch

**WIRING DIAGRAM**



Current as of September 12, 2023 – Subject to change without notice.

**TOPWORX**

3300 Fern Valley Road  
Louisville, KY 40213

(502)969-8000 PH  
(502)969-5911 FAX  
www.topworx.com